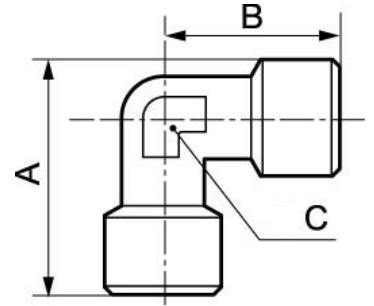


## FITTINGS - ELBOWS - TEE PIECES

### Brass Elbow



#### Min/max operating pressure

0 / 218 psi

Part number	Female thread	Net weight (Kg)	Dim. A (inch)	Dim. B (inch)	Dim. C (inch)
A9 1818	G1/8	0,021	1.08	0.81	0.39
A9 1414	G1/4	0,036	1.36	1.02	0.51
A9 3838	G3/8	0,061	1.52	1.18	0.59
A9 1212	G1/2	0,105	1.85	1.42	0.79
A9 200200	NPT1/8	0	1,09	0,85	0,43
A9 201201	NPT1/4	0	1,43	1,1	0,51
A9 202202	NPT3/8	0	1,57	1,18	0,67
A9 203203	NPT1/2	0	1,84	1,38	0,78